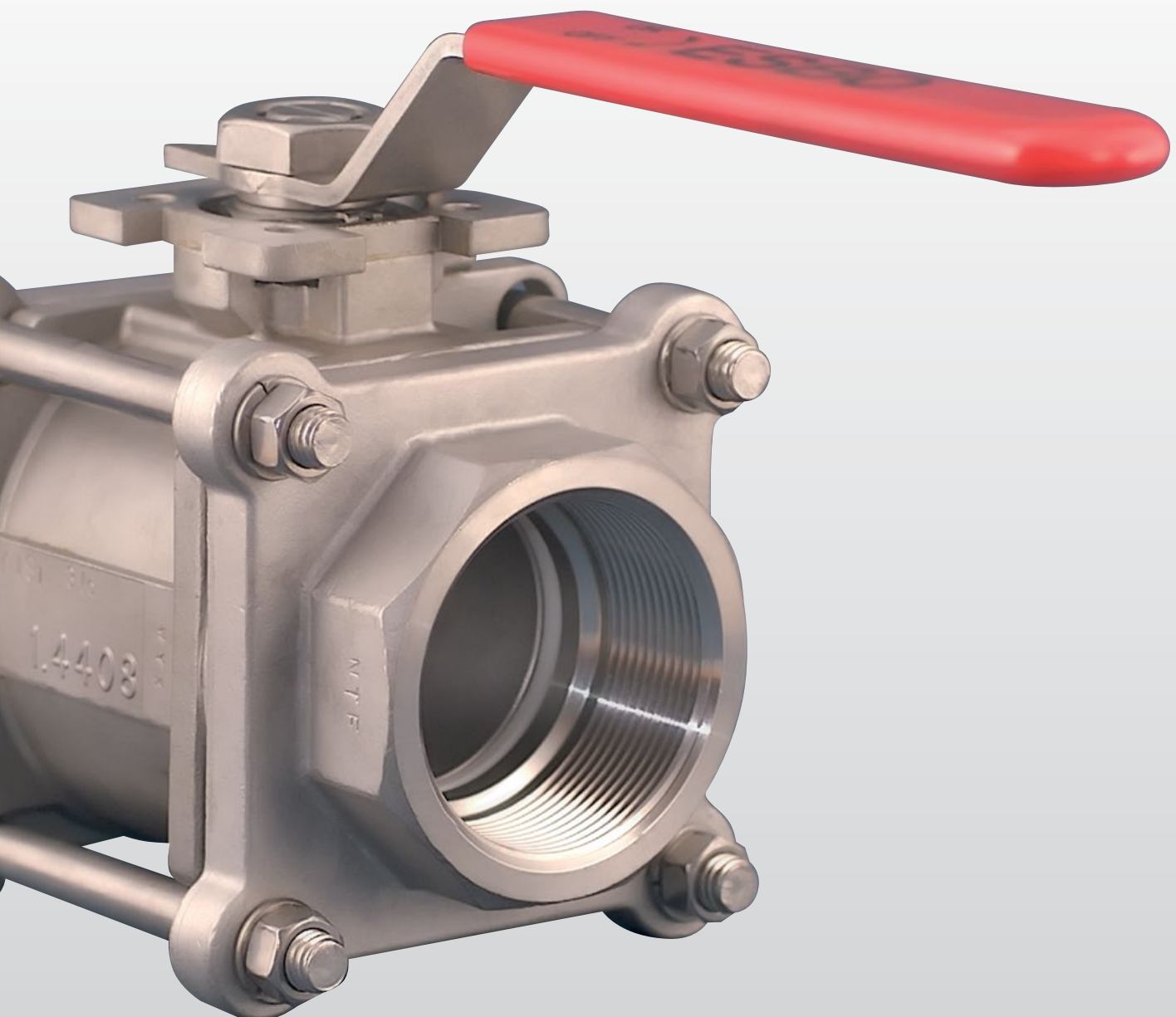




ESBOvalve **M 302**

The M 302 is a silicone-free, blow-off proof ball valve with three-piece body, threaded ends and ISO 5211 top flange



ESB0valve M 302

The ESB0valve M 302 is a ball valve with three-piece body and threaded ends. It features an ISO 5211 top flange for fitting actuators or similar accessories, is silicone-free and has a blow-off proof stem design.



Technical data

Through-bore	1/4" – 4"
Overall length	DIN 3202 M3
Pressure class	PN 100 (1/4" – 1"), PN 63 (1 1/4" – 4")
Enclosure, end cap, ball	1.4408 (316)
Spindle	1.4401 (316)
Thrust washer, spring washer, nut	1.4301 (304)
O-ring (DVGW-GAS, DIN 3535 Part 3)	Viton
Ball seal, sliding ring, packing box, etc.	PTFE, TFM 1600 or RTFE
Handle	1.4301 (304), plastic covering
Threaded ends	DIN EN 10226-1 (previously DIN 2999-1), NPT or BS
Actuators	Hand lever, electrical or pneumatic actuation (ISO 5211)

Dimensions

Size	Bore	ØD	L	H	I	F
1/4"	DN 8	10,6	75	42	9	F03-F04
3/8"	DN 10	12,7	75	42	9	F03-F04
1/2"	DN 15	15	75	42	9	F03-F04
3/4"	DN 20	20	80	48,5	9	F03-F05
1"	DN 25	25	90	58,5	11	F04-F05
1¼"	DN 32	32	110	63	11	F04-F07
1½"	DN 40	38	120	71,3	14	F05-F07
2"	DN 50	50	140	78,2	14	F05-F07
2½"	DN 65	63,5	185	100	17	F07-F10
3"	DN 80	76	205	108,5	17	F07-F10
4"	DN 100	100	240	140	22	F10

ØD: Bore diameter of the ball

L: Face-to-face length of the ball valve

H: Height from boresight to the top edge of the ISO 5211 top flange

I: Size of the square-end for fitting actuators

F: Hole pattern of the ISO 5211 top flange

All dimensions in millimeters [mm]

Other versions

The M 302 is also available in version M 302 Gas with gas approval.

Approvals

TR-Certificate of the Russian Federation



**ESBO-Edelstahl
Rohre und Verbindungsteile GmbH**

Erbsengasse 28
D-69469 Weinheim
Germany

Phone +49 6201 63081
Fax +49 6201 17917

info@esbo-edelstahl.com
www.esbo-edelstahl.com